



BOROUGH OF WOODCLIFF LAKE

Community Forestry Management Plan 2013-2017

Mayor and Council

Jeffrey R. Goldsmith, *Mayor*
Robert Rosenblatt, *Council President*

Donna Abene
Jeff Bader
Jacqueline Gadaleta

Jean Bae
Eric Bloom

Borough Administration

Wolfgang Albrecht, *Borough Administrator & Interim Borough Clerk*
Debbie Dakin, *Deputy Clerk/Registrar, Administrative Assistant*
Harold Laufeld, III, *Chief Financial Officer*
Fariba Negahban, *Finance Assistant*

Shade Tree Committee

Clayton Bosch, *Chairman*
Marilyn Clark, *Chairman Arbor Day and Tree City USA*
Jeff Bader, *Council Representative*
Dave Antoine, *DPW Representative*

Kathleen Bagley
Carlo Disney
Wiebke Hinsch

Johanna Cairo
Josephine Higgins
Bert Taylor

Prepared By:

ForesTree Consultants
NJ Approved Forester and Certified Tree Expert #406, Les Alpaugh
Owner, Andrew Alpaugh
PO Box 211
Stockton, New Jersey
609.397.0615
frstree@comcast.net

This plan was prepared in accordance with the New Jersey Shade Tree and Community Forestry Assistance Act, P.L. 1996, Chapter 135.

May 24, 2003

Revised: September 3, 2013

Table of Contents

	<u>Page</u>
I. Municipal/County Information Form	1
II. Introduction	2
• Mission Statement	2
• Goals and Objectives	3
• Liability Statement	6
III. Community Overview	8
IV. Community Forestry Program Administration	10
• Administrative Flowchart	11
V. Community Maps	12
VI. Training Plan	14
• Required Training	14
• Other Training	15
VII. Public Education, Awareness and Outreach	16
• Ongoing Activities and Programs	16
○ Arbor Day	
○ Oldest Tree Contest	
○ Tree City, USA	
○ Borough Newsletter and Website	
○ Electronic Gateway Sign	
○ Science Fair	
• Possible “New” Initiatives	17
○ Project Learning Tree	
○ Arboretum and Nursery	
○ Local Businesses and Corporations	
○ Adopt-A-Tree	
VIII. Statement of Tree Budget	19
IX. Statement of Plan Implementation	20
• Tree Inventory and Assessment	20
• Tree Hazard Identification and Management	21
• Tree Planting	22
• Tree Care and Maintenance	23
• Schedule of Work	24
X. Community Stewardship Incentive Program Practices (CSIP)	27
XI. Appendix	29
1. Ordinance 07-08; Chapter 53: Shade Tree Committee	
2. Ordinance 07-09; Chapter 211: Shade Trees	
3. Ordinance 07-10; Chapter 245: Tree Preservation	
4. Woodcliff Lake Department of Public Works and Shade Tree Committee Agreement	
5. Municipal Tree Budget -2013 and 2013 tree planting	
6. WCLSTC Annual Reports	

I. MUNICIPAL/COUNTY INFORMATION FORM

Municipality	<u>Borough of Woodcliff Lake</u>
County	<u>Bergen County</u>
Address	<u>188 Pascack Rd.</u> <u>Woodcliff Lake, NJ 07677</u>
Contact Name and Title	<u>Marilyn Clark, Chair Arbor Day and Tree City</u>
Phone #	<u>201-391-4977</u>
Fax # and E-mail	<u>201-391-8830 mijclark@wclnj.com</u>
Organization Name	<u>Borough of Woodcliff Lake Shade Tree Committee</u>
Mayor/County Freeholder's Signature	<u></u>
Date of Management Plan Submission	<u>June 2013</u>
Time Period Covered in Management Plan	<u>2013-2017</u>
Community Stewardship Incentive Program (CSIP) Practices Identified in Management Plan	<input type="checkbox"/> CSIP #1 Training <input type="checkbox"/> CSIP #2 Community Forestry Ordinance Establishment <input type="checkbox"/> CSIP #3 Public Education and Awareness <input type="checkbox"/> CSIP #4 Arbor Day <input type="checkbox"/> CSIP #5 Tree Inventory <input type="checkbox"/> CSIP #6 Tree Hazard Assessment <input type="checkbox"/> CSIP #7 Storm Damage Assessment <input type="checkbox"/> CSIP #8 Tree Maintenance and Removals <input type="checkbox"/> CSIP #9 Insect and Disease Management <input type="checkbox"/> CSIP #10 Wildfire Protection <input type="checkbox"/> CSIP #11 Tree Planting <input type="checkbox"/> CSIP #12 Tree Recycling <input type="checkbox"/> CSIP #13 Sidewalk Maintenance Program <input type="checkbox"/> CSIP #14 Storm Water Management <input type="checkbox"/> CSIP #15 Other

**Official Use Only
Certification**

The above named municipality/county has made formal application to the New Jersey Forest Service. I am pleased to advise you that after our review, the NJ Forest Service has concluded that this plan meets the standards set forth by the State and the NJ Community Forestry Council and is approved for the period covered.

Signed _____

State Forester

Approved Date _____

II. INTRODUCTION

This 5-year Community Forestry Management Plan (CFMP) for the Borough of Woodcliff Lake, Bergen County is prepared in accordance with the New Jersey Shade Tree and Community Forestry Act, P.L. 1996, Chapter 135 to guide the Borough in its efforts to create, protect, sustain and manage a robust healthy tree resource for the environmental, aesthetic and economic benefit of residents, visitors and businesses. The efforts of the Woodcliff Lake Shade Tree Committee (WCLSTC) during the next 5-year period will focus on continuing existing tree related programs including tree planting and tree care with an added emphasis on completing an inventory of Borough trees. This inventory will serve as a basis for increasing STC effectiveness and results.

Members of the WCLSTC met with ForesTree Consultants (FTC) on April 22, 2013 to collect information and to discuss elements of the plan. WCLSTC members held a brainstorming session in preparation for the meeting with FTC. This meeting proved very valuable to the discussion with FTC and facilitated concise and timely information transition from the WCLSTC to FTC. After the meeting, FTC toured the Borough to gain insight and impressions regarding the status of the Borough's trees, its needs and opportunities. This plan organizes the thoughts of the aforementioned into the context required by the Act and outlines goals and objectives for the future. Approval of this plan by the State Forester, following approval by Borough officials, and after favorable recommendation by the NJ Community Forestry Council; will provide additional liability protection to the Borough under the provisions of the New Jersey Shade Tree and Community Forestry Act. Approval will also render the Borough eligible to receive grant funds from the Department of Environmental Protection NJ Forest Service to assist in the implementation of this plan.

Mission Statement:

The mission of the Woodcliff Lake Shade Tree Committee as stated in the Borough ordinance is "to advise the Governing Body on all matters concerning the regulation, planting,

removal, care and control of shade and ornamental trees and shrubbery upon and in the streets, highways, public places and parkways, [which] shall be exercised by and be under the authority of the Shade Tree Committee of the Borough of Woodcliff Lake.”

Goals and Objectives:

Goal #1:

To sustain the existing cooperative enterprise, funding, administrative capacity and technical knowledge of Shade Tree Committee members and selected Department of Public Works(DPW) personnel.

Objectives of Goal #1:

- ☐ Continue to hold scheduled agenda driven meetings of the WCLSTC.
- ☐ Identify external stakeholders and partnerships, and develop appropriate engagement model and communications plan.
- ☐ Maintain participation of DPW and liaison with Borough Council.
- ☐ Maintain at least 1 CORE trained WCLSTC member and one Borough employee (preferably a DPW supervisor).
- ☐ Maintain membership in the NJ Shade Tree Federation and attend annual meetings.
- ☐ Provide educational opportunity to DPW employees and WCLSTC members in tree inventory, tree hazard identification, tree pruning methods, tree species and chainsaw safety as appropriate.
- ☐ Explore funding opportunities such as:
 - Citizen Adopt-a-Tree or other.
 - Corporate sponsors.
 - Grants.
 - ‘Trusts’.
 - Builder’s escrow.
 - Independent tree fund.
 - Mitigation and fines.
- ☐ Consider designating and plan for the use of NJ Certified Tree Experts during emergency events via the Borough’s Emergency Management Plan.
- ☐ Designate WCLSTC liaison persons to United Water, Verizon, Bergen County Shade Tree Commission, Garden State Parkway, State of New Jersey, local shops and businesses, PSE&G and corporations.

- ☐ Prepare and submit annual(January) reports to the NJ Forest Service Community Forestry Program.
- ☐ Continue to seek new STC members as vacancies occur.

Goal #2:

To gather and maintain up-to-date data on the extent, location, composition and condition of the Borough's shade trees.

Objectives of Goal #2:

- ☐ Continue STC member and DPW practice of "windshield" surveys; and to establish a simple method to record observations made by date and observer.
- ☐ Research and determine expected end uses of inventory information and data required to support these uses.
- ☐ Research and decide upon a street tree inventory and assessment method, data to be collected, and data storage options for use in the inventory.
- ☐ Discuss alternatives, costs and benefits of different inventory and assessment options with FTC.
- ☐ Complete basic training in hazard tree assessment and tree identification prior to data collection if inventory data is to be collected by STC members.
- ☐ Conduct Tree Inventory
- ☐ Keep data up-to-date by developing a system to record trees removed, trees planted, pruning, deadwood removals or tree plantings.

Goal #3:

To maintain and ensure the safety of the Borough's trees.

Objectives of Goal #3:

- ☐ Based upon information from the WCLSTC, DPW and homeowner reports as well as information from a systematic inventory and assessment; develop a priority listing of trees to be removed or pruned (include trees in the public right-of-way as well as those on private property having the potential to impact on the right-of-way.)
- ☐ Inform and advise the Mayor and Council regarding the location and extent of hazardous tree conditions.
- ☐ Develop and advocacy program for tree maintenance. 'Preach' that long-term care begins when trees are planted, investments in proper tree pruning extends tree life, and focusing just on removals is the result of long-term neglect of tree health between planting and death.
- ☐ Continue to educate homeowners regarding tree hazards, proper tree care techniques (mulching, pruning and elevation) and personal safety when cutting and pruning trees.

- ☐ Encourage the use of N.J. Certified Tree Experts by the Borough and homeowners for tree maintenance and care work.
- ☐ Consider registration by tree companies as a pre-requisite to working in the Borough.

Goal #4:

To conserve and sustain natural vegetation, wooded areas and shade trees which are integral to the Borough's aesthetics (*from 2008 Master Plan*).

Objectives of Goal #4:

- ☐ Review ordinances and recommend changes with emphasis on the number of heritage trees permitted for removal in consideration of lot size and existing numbers of trees.
- ☐ Determine the Borough's existing percentage of tree cover and establish no-net loss (gain) policies (a 'Sustainable NJ' measure).
- ☐ Complete long-range planning for tree planting based on inventory of available planting spots. Continue annual tree plantings at the rate of 30-70 per year.
- ☐ Continue to diversify species selected/recommended for planting – concentrate on native hardwood species.
- ☐ Replace, as needed, trees lost in recent storms (Sandy – October 2012 and the ice/snow storm October 2011).
- ☐ Enhance gateways and Borough owned lots via tree planting, tree maintenance and 'clean-up'.
- ☐ Place emphasis on maintenance of Causeway trees and provide leadership in maintaining other town showcase areas such as:
 - Tennis court
 - Pool Landscaping
 - Old Mill Park entrance landscaping
 - Town properties (Hathaway property and undeveloped areas)
 - Railroad Station
 - Gateway entrances
- ☐ Continue the DPW recycling service to property owners of branches, Christmas trees and leaf pickup.

Goal #5:

To be an advocate for the Borough's trees by informing/educating residents, elected officials and others of the benefits, property practices and activities/programs related to the Borough's trees.

Objectives of Goal #5:

- ☐ Continue the Borough's proclamation and celebration of Arbor Day.
- ☐ Continue participation and awards from Tree City, USA.
- ☐ Continue to utilize social media (Facebook, Twitter, etc.) postings or the Borough's website and electronic gateway sign to inform residents on seedling availability, recycling, ordinances, Arbor Day programs and other information relative to tree care:
 - Identify and list wetland tree and shrub species for builders and homeowners.
 - Ordinances (ex. Heritage trees)
 - Insects and diseases affecting trees
 - Proper mulching, pruning and elevation
- ☐ Establish a Borough Arboretum and a Tree Nursery.
- ☐ Engage in educational and outreach seminars for contractors and homeowners.
- ☐ Conduct outreach to Borough Schools to develop educational opportunities for children. Consider 'Project Learning Tree' and/or interpretive walks led by STC members.

Liability Statement:

Trees in the Borough of Woodcliff Lake are dominant in the landscape and create a pleasing environment for living, work, and play. Although street trees are an asset to the community, it is inevitable that they mature and require care, maintenance and eventually replacement. Care and maintenance, in addition to planting "the right tree in the right place," can help ensure community trees not only contribute to the environmental and economic vitality of the area, but also reduce the potential hazards to public safety. Woodcliff Lake must work within a reasonable budget that may not be able to meet each and every need of the community forest immediately. Therefore, it is the intent of this plan to focus available resources on the greatest need and outline a step by step action plan to achieve a healthy forest with commensurate reduced risks to public safety.

The Borough feels, by taking the logical steps outlined in the plan, it will garner public support for plan implementation and demonstrate long-term benefits to the environment and public safety. The Borough seeks to maintain and improve its program for management and care of the trees. Through hazard assessment, the Mayor and Council can enable corrective

action by its employees, contracted professionals, the local utility, or the county prior to structural tree failure and other hazardous tree related conditions. It is acknowledged that not all hazardous conditions will be predicted, however, good maintenance and care will reduce the probability of tree failures. The Borough also wants to increase homeowner and school children's awareness, appreciation, and knowledge of trees to enable them to contribute well-informed and meaningful efforts towards the health and sustainability of Woodcliff Lake's trees.

Following this Community Forestry Management Plan will demonstrate that the Borough of Woodcliff Lake is devoting reasonable levels of resources in a planned manner to reduce the number of tree related accidents, and thereby, reduce its exposure to liabilities and increase public safety.

III. Community Overview

The Borough of Woodcliff Lake is located in the northwest portion of Bergen County, consisting of about 2,300 acres or 3.6 sq. miles. It is an up-scale residential community near New York City. *“Originally, the Algonquin Indians were the first settlers in this fertile area of Pascack Valley. When the Dutch East India Company settled nearby Manhattan in the early 1600’s, they exchanged beads and other trinkets for the coveted Indian beaver pelt. Beaver hats were the rage in Europe at the time, especially among the English who were willing to pay top prices for quality pelts. As the beaver trade diminished, the settlers found new riches in New Amsterdam. Beyond the Palisades were rolling hills and verdant valleys that the early settlers transformed into a productive agrarian society. The Borough was incorporated in 1894 under the name of Woodcliff. The word “Lake” was appended to the name in 1910 to be the same as that of the Post Office. The form of government requires election of a Mayor (four year term) and six (6) Town Council (staggered three year terms) members.”* – From the Official Website of the Borough of Woodcliff Lake.

The fully developed community still boasts of heavily wooded single family lots. The Borough has a population of ~5,700. The residential building sites were carved out of the original native hardwood forest. Many trees exceed 100 years of age and are entering the older age class for native New Jersey hardwoods. Many niches of trees are overstocked, leading to competition between individual trees for growing space.

Interestingly, the Borough does not have a ‘main street’. A relatively new ‘shopping center’ is located on the former Tice Farms. Corporate entities include the North American Headquarters of BMW, the Headquarters of Perillo Tours and multi-tenant office buildings housing Sony and KPMG.

Woodcliff Lake is also the name of the reservoir that lies primarily within the Borough and covers about 5.5% or 125 acres. The reservoir, constructed in 1903, is owned and administered by United Water, a private company. There are two recreational areas in the Borough; a 55 acres County owned park with pond, walking paths, tennis courts and

playground; and the Borough owned Old Mill complex with swimming area, tennis courts and athletic fields.

The 2008 Woodcliff Lake Master Plan repeatedly states the high value the residents place on environmental and natural resource elements. Several of the seventeen goals in the Master Plan relate to the importance of sustaining a vibrant and robust community forest. Following this plan will bring focus to activities directed towards achievement of Master Plan goals.

After the indoor meeting between FTC and the WCLSTC, Clay Bosch escorted visiting consultants – Andy and Les Alpaugh on a brief tour of the Borough. Mr. Bosch has many years of experience and knowledge concerning the shade trees, politics and historical facts in Woodcliff Lake. He imparted much information in a short period of time – too much to absorb and record here! Highlights of the drive through the Borough include:

- There are no serious insect or disease problems currently present.
- There are very few sidewalks.
- Much of the residential area is heavily forested with mature native hardwoods.
- The tree canopy % is higher than many NJ municipalities.
- There is really no 'town center'.
- Callery pears were in bloom – representing the 'good' side of the cultivar. Blooming trees across the causeway are impressive. Some of the older pear trees exhibited the 'bad' side of the species – being subject to breakage as trees age.
- 'New' plantings are diverse – a good thing!
- The shopping center @ Tice Farm has many flowering trees and could benefit from some more native shade tree with potential to grow large and live a long time.
- Several significant and impressive corporate headquarters and businesses are located in the Borough.
- The Borough is already fully developed.
- Some of the recent (last 10-years) plantings need elevation – removal of lower branches while maintaining 2/3rds of the tree in green and 1/3 of the tree clear bole. Plus, pruning to ensure trees have one central stem.
- The electric billboard near Old Mill Park is neat!
- Corporations in the Borough, BMW in particular, show that they value trees by their planting and care of trees on their properties. These corporations could be a source of funding for tree related programs as part of their community outreach.

IV. Community Forestry Program Administration

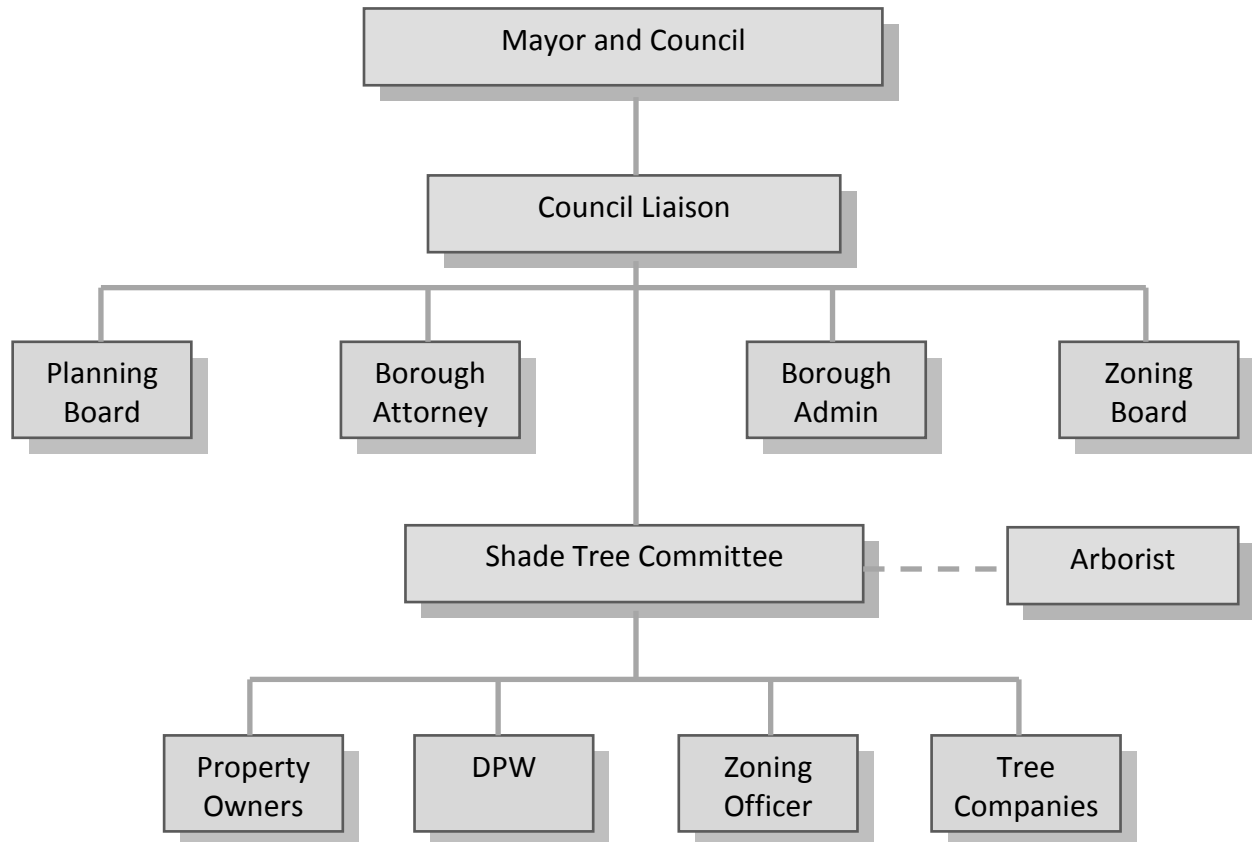
Responsibility and accountability for the management of the Borough's trees begins with the Mayor and Council, guided by the Shade Tree Committee (STC) and implemented by the STC and Department of Public Works (DPW). Private arborists, tree experts and utility companies engage in tree work which augments efforts made by DPW. Members of the Woodcliff Lake Shade Tree Committee are:

- Dave Antoine, Department of Public Works Liaison
- Jeff Bader, Council Representative/Liaison
- Kathleen Bagley
- Clayton Bosch, Chairman
- Johanna Cairo
- Marilyn Clark, Chairman Arbor Day, Tree City
- Carlo Disney
- Josephine Higgins
- Wiebke Hinsch
- Bert Taylor

This is the same group that is identified on the Municipal/County Information form. The WCLSTC is a long-standing committee with a very good relationship with the Mayor and Council. STC activities are relayed to the Mayor and Council via a Council Liaison. The DPW Acting Supervisor is liaison to the STC. There is a written agreement between the DPW and the STC with the stated purpose "to review and understand how STC and DPW can work together most effectively and harmoniously." Both signatories of the agreement are STC members. The Borough should be proud of this agreement which is seldom seen in other municipalities.

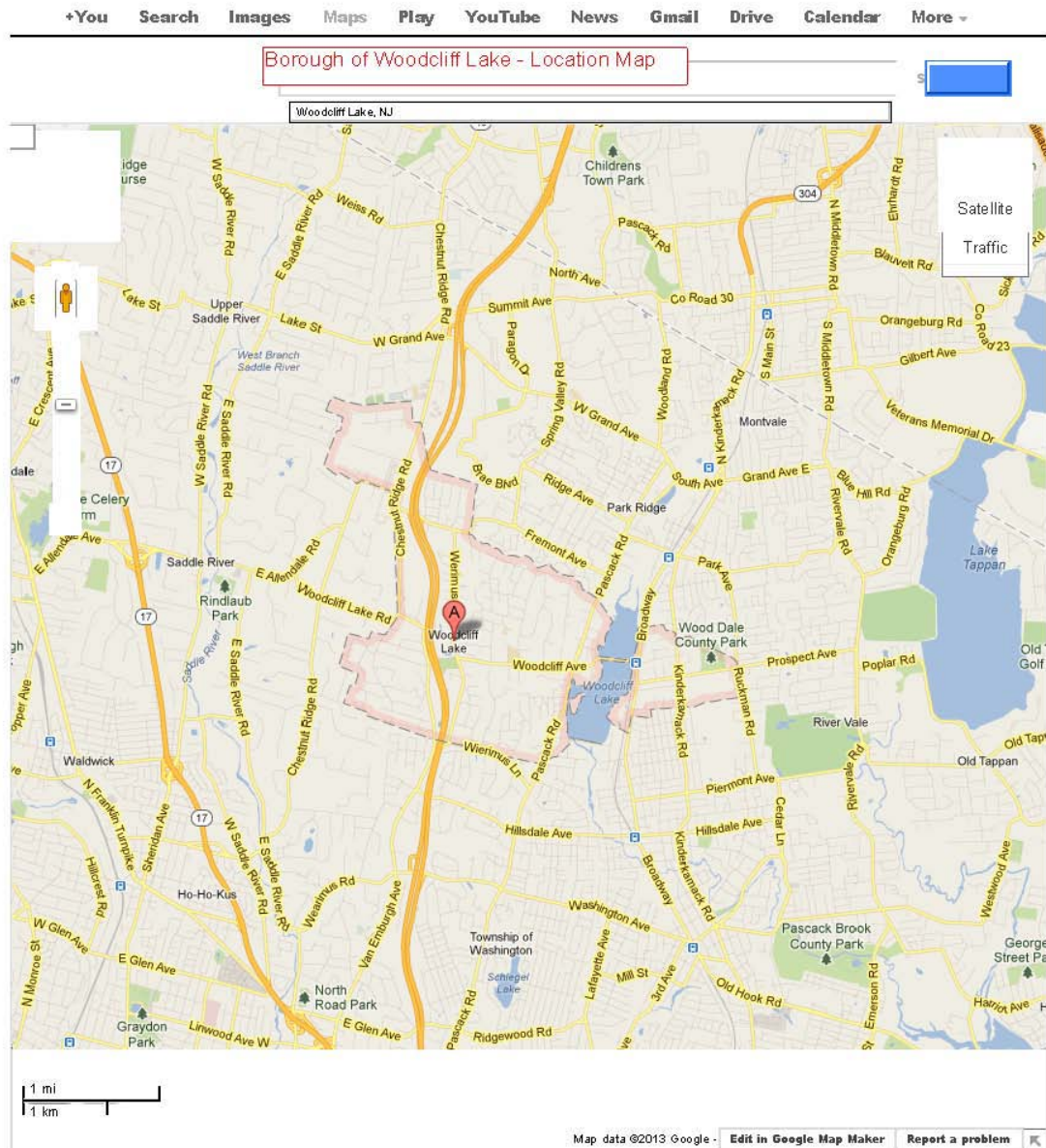
Resident requests for tree service and response procedures are outlined in the aforementioned DPW – Shade Tree Agreement included in the appendix.

Administrative Flowchart:



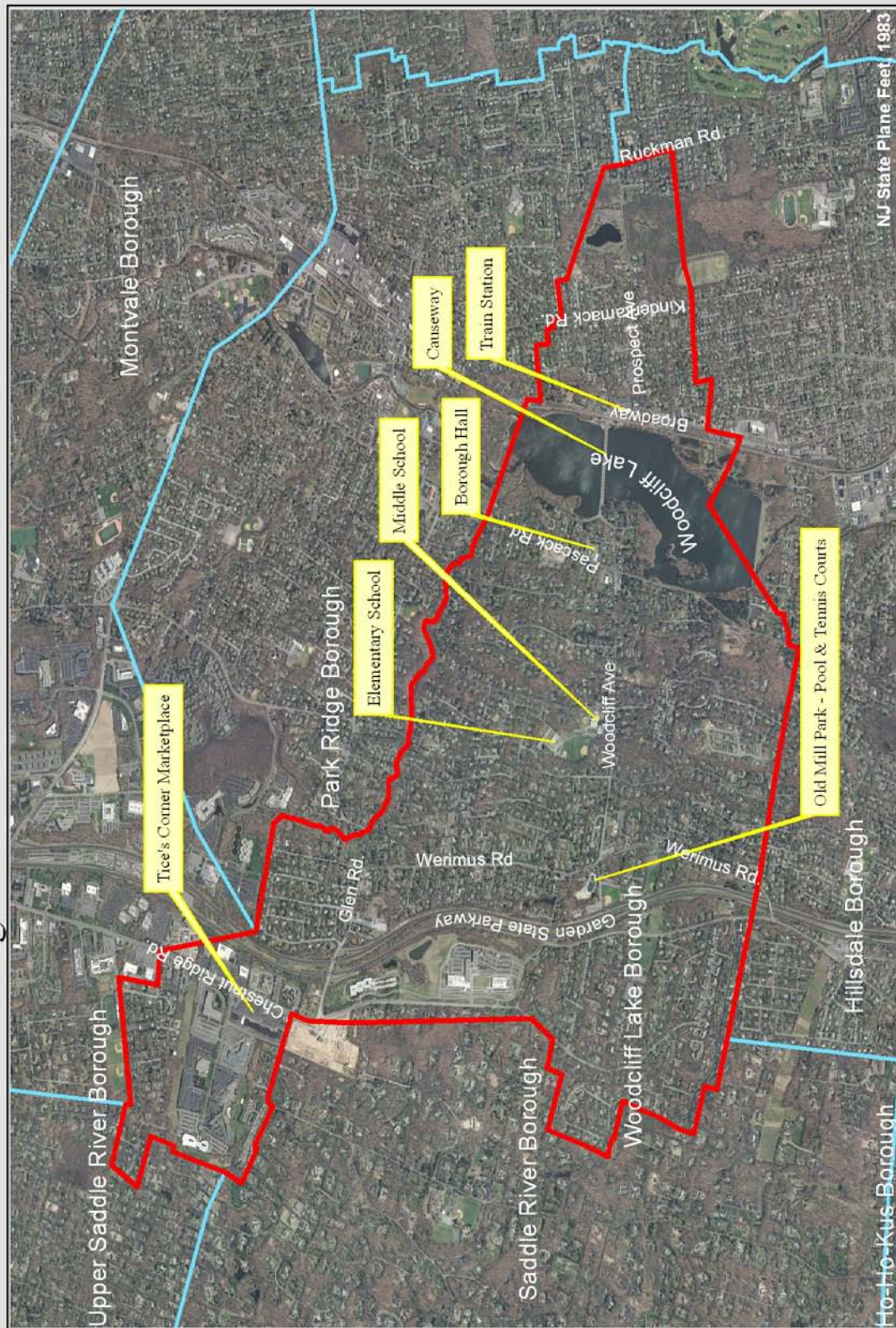
V. Borough of Woodcliff Lake Community Maps

Woodcliff Lake, NJ - Google Maps



<http://maps.google.com/maps?e=UTF-8&H=en&tab=w> [5/24/2013 12:07:30 PM]

Borough of Woodcliff Lake - 2012 Aerial Photo



0.5 0.25 0 Miles
 Legend
 Borough of Woodcliff Lake
 Municipal Boundary
 Prepared By: ForestTree Consultants
 May 24, 2013
 This map was produced using NJ Department of Environmental Protection Geographic Information Systems digital data, but this secondary product has not been verified by NJDEP and is not State-authorized.

VI. Training Plan

Training is required by the State to retain “approved” status under the Community Forestry and Shade Tree Act; in addition some training topics are identified by STC members and/or supervising personnel in the Borough.

Required Training:

CORE training is required by the New Jersey Shade Tree and Community Forestry Act for municipalities seeking approved status under the Act. The purpose of CORE training is to familiarize persons with the background of community forestry and shade tree commissions, the legal aspects of managing trees, recognition of hazardous tree conditions and state planning and implementation assistance. To gain and retain approved status a municipality must have at least two persons CORE trained; one volunteer (usually the STC chairperson) and one municipal employee (ideally someone from public works that is responsible for trees). The WCLSTC has three CORE trained persons – Clay Bosch, Marilyn Clark, STC member and David Antoine, Acting DPW Supervisor. It is the intent of the Borough to maintain at least the minimum required persons CORE trained and obtain the required number of CEU’s during the plan period. Other STC members will be encouraged to attend the Shade Tree Federation meeting this Fall.

In addition to CORE training, there is a continuing education requirement of 8 Continuing Education Units (CEU’s) per year. Continuing education is not limited to CORE trained persons and any individual may obtain CEU’s for the Borough. These credits can most easily be obtained by attending the NJ Shade Tree Federation meeting held in October each year. There are also periodic training opportunities by various tree organizations and the New Jersey Forest Service. Funding is available for this training. Notice of upcoming training opportunities can be found at

<http://www.nj.gov/dep/parksandforests/forest/community/act.html> .

Other Training:

The need for basic training so necessary to achieve community forestry goals does not exist in Woodcliff Lake as it may in other municipalities. The members of the WCLSTC possess a wide range of skills associated with its assigned responsibilities. These skills have been gained through many years of experience and education. Uncommon knowledge of plant and tree species, tree care and planting techniques; administrative process and the on-going practice of seeking training opportunities as they arise enables the WCLSTC to function well above the norm. Over the years guidance from Bill Comery has been essential to the training/educational needs of the Shade Tree Committee.

In this plan, the STC has identified the need for a tree inventory as a high priority. STC members need to be appraised of the various means, methods, equipment, record keeping and processes before starting the inventory. Initially a rather steep learning/experience curve is the reality. FTC will advise as requested. Training on tree inventory and systems such as i-Tree can be found online and is often a topic at the NJ Shade Tree Federation meeting. Several members of the STC attended a Bergen Shade Tree League lecture on evaluating hazardous trees. Attending continuing educational opportunities on hazardous tree evaluation is important and will be continued. Members of the WCLSTC are well informed on many tree related subjects and have the ability to learn from one another as well as by attending other more formal training.

VII. Public Education, Awareness and Outreach

This element is primarily the responsibility of the WCLSTC. Keeping Borough residents and the Mayor and Council informed of planned activities and accomplishments will continue to form the underpinnings of success. WCLSTC members appreciate the value of education, increasing awareness and the necessity of outreach. A summary of efforts follows:

Ongoing Activities and Programs:

Arbor Day:

An Arbor Day proclamation and celebration takes place each year. The celebration is usually held at Woodcliff Lake Elementary and Middle Schools and includes a tree planting ceremony. Seedling trees are distributed.

Oldest Tree Contest:

In 2012, school children were challenged to find the oldest tree in the Borough. Awards were presented at the annual Arbor Day event. The oldest tree was reported to be a 300 year old horse chestnut.

Tree City, USA:

Woodcliff Lake is currently in its 7th year of participation and has received the Growth Award for the 2nd time. Tree City, USA is an award given by the Arbor Day Foundation in cooperation with and approved by the NJ State Forester. Application to the program must be made annually.

Borough Newsletter and Website:

The WCLSTC has an article in each issue of the Borough newsletter which is published in the spring and fall. The Borough website lists the WCLSTC and has information on STC members, tree ordinances, a brochure for tree planting, Arbor Day announcements and other tree related subjects.

Electronic Gateway Sign:

A novel method of publicizing town events is an electronic sign which displays information of importance to residents. The WCLSTC posts information about tree availability, Arbor Day Programs and other tree related information.

Science Fair:

The WCLSTC participated in the science fair at the Woodcliff Lake Middle School.

Possible “New” Initiatives

Project Learning Tree:

The Borough of Woodcliff Lake STC acknowledges the importance of helping young students learn more about trees and the environment. One program helping to expand and influence young minds is Project Learning Tree. The PLT program is an international environmental education program that is crafted to meet state and national education standards. PLT provides the tools educators need to bring the environment into their classrooms and their students into the environment. The PreK-8 activity guide contains 96 multi-disciplinary activities, each activity is carefully designed for specific grade levels and learning objectives. Recently, the PLT guide has been correlated to the NJ Core Curriculum Content Standards required by the New Jersey Department of Education. The WCLSTC will encourage local schools to send some of their teachers to PLT workshops and to develop their own PLT Trunk which is loaded with many teaching aids, books, and videos. More information can be obtained from the NJ Forest Service website at:

<http://www.nj.gov/dep/parksandforests/forest/plt.html>

Arboretum and Nursery:

The concept of establishing an arboretum and/or nursery have been in discussion for several years. Both have the potential to provide trees for future use and as a vehicle for public education and volunteer training.

Local Businesses and Corporations:

Utilization of the 'social consciousness' of local businesses and corporation continues to be an objective of the WCLSTC. Focus will turn to defining a number of specific projects and/or programs needing PR and financial support for presentation to local business leaders.

Adopt-A-Tree:

Adopt-A-Tree programs have many variations and applications. For example Woodcliff could encourage community members to adopt and care for street trees in front of their homes during Arbor Day festivities. The Adopt-A-Tree program can be as simple as a verbal agreement with a resident to care for a tree or as formal as a written adoption agreement for a tree provided and planted by the STC on a resident's property. Examples of Adopt-a-Tree programs run by similar communities are available online by searching 'Adopt a Tree in New Jersey'.

During the first year of this planning period, the WCLSTC will define its Adopt-A-Tree program and prepare a brochure explaining the new program to residents. The WCLSTC envisions a program focused on increasing tree canopy on private property throughout the Borough and on augmenting the ongoing plantings along municipal rights-of-way.

VIII. Statement of Tree Budget

The Borough of Woodcliff Lake is like many other small towns with limited resources in Bergen County where trees and tree care do not always compete well with demands for other services. Focus in normal years is on tree replacement plantings and pruning/take down of hazardous trees. 2011 and 2012 were unique in their impact on the Borough's trees as a result of the surprise snow and ice storm in October 2011 (Irene did little damage in the Borough) and Hurricane Sandy. A large percentage of the STC's budget in these years went to storm cleanup and hazard reduction. Damage from the storms created opportunity for tree planting and a need for increased funding. Details of the 2013 Municipal Tree Budget and 2013 tree planting can be found in Appendix #5.

Municipal Tree Budget – 2013

Shade Tree Committee

\$ 14,750.00

- Tree planting and replacement
 - 31 trees were planted throughout Woodcliff Lake in the spring of 2013. About 11-15 are to be planted in the fall of 2013
- Education, awareness, outreach
 - Expenditures enabled the Arbor Day program and literature for Woodcliff Lake.
- Grant Matching
 - Assigns funds to match the \$3,000.00 State grant to complete this community forestry management plan in 2013.

DPW Tree Related

\$ 92,889.00

- Pruning by town \$ 1,500.00
- Removals by town \$12,200.00
 - 15 trees removed
- Leaf/waste compost by town \$79,189.00
 - 55,000 cubic yards of leaves

Administrative Tree Related

\$ 4,000.00

- Green Communities Grant \$ 3,000.00
 - NJFS grant to assist with preparation of this plan.
- Administration \$ 1,000.00

Total Tree Budget (approx.)

\$111,639.00

IX. Statement of Plan Implementation

Much of the Borough of Woodcliff Lake Community Forestry Program will focus on continuing time-proven activities. The WCLSTC has an outstanding record of accomplishment spanning many years. The current assemblage of members combines long experience, expertise, enthusiasm and business acumen. The primary new emphasis is to complete a tree inventory and then to use collected data to develop and recommend hazard tree management tasks, tree planting projects and assign priorities to systematic tree maintenance and care program.

Ongoing annual program objectives include the training, education, awareness and outreach activities defined in Sections VI & VII and those mentioned in the Overview. The remainder of this section will focus on the 4 required categories regarding:

- Tree Inventory and Assessment
- Tree Hazard Identification and Management
- Tree Planting
- Tree Maintenance and Care

Tree Inventory and Assessment:

The Borough of Woodcliff Lake does not have a tree inventory. The STC members understand the value of having accurate information concerning the Borough's trees and have identified the completion of an inventory and assessment as the highest priority new task for the next few years.

The challenge for the STC in the next year includes answering the following the questions prior to beginning any data collection for the inventory:

1. What are the reasons for the inventory and what questions should the data collected be able to answer?
2. What information is required to answer the questions above? What information is not necessary? What level of precision is required?
3. How is the information going to be stored? Displayed? Analyzed?
4. What equipment/software/technical expertise is already available? Can this equipment be adapted to the task? If not, what equipment/software/technical expertise is needed?

5. Who is going to collect the data? What training do they require?
6. Who is responsible for the maintenance of the data? How is work completed tracked?
7. Who will prepare and distribute the reports on the inventory?

The answers to the above questions are necessary prior to considering the next steps in the inventory process. Options range from a basic hazard tree inventory that records the most obvious hazards to a professional inventory conducted by a consultant using the latest GIS/GPS based inventory systems.

FTC recommends the first efforts in inventory and assessment should focus on the identification of hazardous trees to be removed, trees with significant dead wood more than 3-4 inches in diameter that need pruning and vacant planting spots. Given the nature of woodland edges along roadways and few sidewalk planting strips it is not practical to inventory all roadside trees. After hazards and planting spots are inventoried and located efforts could shift to inventorying and locating trees planted in the last 10-years to assess status of lower limb pruning and single central stems.

Data from the inventory will be used to inform the Mayor and Council on the condition and needs of the tree resource. The data will also support grant applications to the State for future tree planting, tree maintenance and hazard reduction.

Tree Hazard Identification and Management:

Hurricane Sandy and the October 2011 ice and snow event renewed most everyone's interest in the safety of municipal trees – especially the old large ones. Hazardous trees are routinely sought following storm events by DPW and the WCLSTC. Driving through the Borough of Woodcliff Lake, several dangerous trees were observed while others need closer inspection. The current system of hazard tree identification by DPW employees, WCLSTC members and residents is not systematic or very predictive. Hazards are usually reported after they fail – not before.

The results of the planned inventory and assessment will quantify and locate hazardous trees. Priorities for tree removal or pruning of hazardous limbs will be presented in the assessment report following the inventory. These reports should be prepared for portions of the Borough as the inventory progresses so that action may be taken on any significant hazards found. The work of the WCLSTC will not end after the

mapping and tally of hazardous trees is completed. Some confirmation of hazardous trees may be sought from a NJ Certified Tree Expert. Additionally, the STC will need to seek funds for the proposed work and will need to adequately inform the residents (especially adjacent landowners) of the scope of work along with information supporting the need to remove hazardous trees. Informing Borough residents of planned removals and pruning before work begins will stave off a lot of controversy in the long-run.

Tree Planting:

One of the key elements of any Community Forestry Management Program is tree planting. Woodcliff Lake is fortunate to have many trees along its streets and many heavily wooded homesites. In 2012, the Borough planted 105 trees (due to Hurricane Sandy) and 31 trees in spring 2013. Good planting spots will be identified during the inventory and assessment process which could lead to a special tree planting project seeking financial aid from State grants and/or local businesses.

Current arboricultural thought is to have a diverse tree composition, thus thwarting insect outbreaks, diseases and monotony in the landscape. References such as, 'Trees for New Jersey Streets' by the New Jersey Shade Tree Federation can help inform persons about species selection and diversity. Understanding and implementing the concept of "planting the right tree in the right place" will help ensure a long-lived, healthy and robust community forest.

Sometimes the best place to plant a new tree is next to the public right-of-way on private property. To date the Borough's policy is to plant a tree only on municipally controlled land. Discussion is ongoing within the WCLSTC to create an Adopt-a-Tree Program for residents that would extend to private property.

As the cost of planting a 3-4" caliper tree approaches \$350-\$400 per tree it is prudent to seek alternatives where appropriate. The alternative (and one used by our forefathers) is to plant 5-6' whips. Whips/liners are available at a cost of \$15-\$25 each FOB the nursery. The whips must be protected from vandalism and accidental damage but the long-term results of planting whips could be significant – many more trees at

less cost! Establishment of a Borough nursery site could allow the WCLSTC to grow whips from seedlings given adequate site, maintenance and water. Growing seedlings in pots to whip size is a realistic undertaking.

Tree Care and Maintenance:

The inventory and assessment will help define the need for maintenance. Applied maintenance throughout a tree's lifetime will extend the life and utility of the community forest. During the first 10-years after planting trees must be checked for single central stems and pruned as necessary. Elevation can begin in 5-6 years and should extend until the first 16' of trunk is clear. It is necessary to remember the 1/3 – 2/3 rule stating that at least 2/3 of the tree should remain in green with a maximum of 1/3 of the green removed at any one time. Crossing limbs, limbs with poor angle of attachment and correct scaffolding according to species are all ongoing challenges to maintaining a tree.

It is best to identify and make pruning cuts when the limbs to be cut are small. As trees become larger it is possible to remove larger limbs. However, even large trees have limits. Recommendations are to remove limbs prior to their reaching 3-4" in diameter to help avoid creating a defect. Cutting 12" limbs from large trees is sometimes necessary but most assuredly will result in a defect over the next 10-20 years. It is hard to assign years of life added by proper pruning throughout a tree's life as a shade tree, but the author suggests that increases of 40-100 years are common. Proper tree maintenance is a vicious circle which requires unusual vision and long-term dedication over generations to achieve. Hopefully, the adoption of this plan and the receipt of CSIP funding from the State will help.

One way to get started with some tree maintenance is to get a small amount of money from the Borough budget and hire a competent N.J. Certified Tree Expert to prune several trees in a prominent location. Pruning trees is an art and can be quite the community event to watch. Several trees in the park are good candidates for a pruning demonstration.

Schedule of Work

Borough of Woodcliff Lake Community Forestry Management Plan

2013-2017

Ongoing Activities (annually):

1. Hold regular agenda driven STC meetings and designate liaisons (see Goal #1).
2. Continue established program elements:
 - a. Administer Heritage Tree Removal ordinance.
 - b. Arbor Day in the Elementary and Middle Schools, plus oldest/biggest tree contest.
 - c. Tree Planting, 30-70 trees per year.
 - d. Hazard tree identification and Response
 - e. Maintenance of causeway pear trees.
 - f. Response to resident requests, recycling limbs and Christmas trees.
 - g. Retain Certified Tree Expert as part of Borough's Emergency Management Plan
 - h. Tree City, USA – application annually and awards
 - i. Participate in Science Fair
 - j. Contributions to Borough website and newsletter
3. Seek out grants to help implement this plan
4. Maintain membership in the New Jersey Shade Tree Federation and attend annual meeting.
5. Maintain CORE training requirements of a minimum of 2 CORE trained persons(1 volunteer and 1 employee)
6. Maintain Continuing Education Units at 8 per year
7. File annual report to the State Community Forestry Program at year's end

NOTE: Ongoing work list includes activities/topics in the Training & Education/Awareness/Outreach sections.

Specific Activity Schedule by Year

Year

Description of Work

2013

- ☐ Complete Community Forestry Management Plan in Spring 2013.
- ☐ Attend CORE training at the NJ Shade Tree Federation meeting in Fall 2013 – a minimum of 1 volunteer and 1 employee must be CORE trained. Contact: NJSF @
New Jersey Shade Tree Federation
Blake Hall, 93 Lipman Dr.
New Brunswick, NJ 08901
Phone: (732)246-3210
FAX: (732)640-5289
E-mail: njshadetreefederation@att.net Website: <http://www.njstf.org/>
- ☐ Research and make decisions regarding specific plan for inventory and assessment.
 - Use of data
 - Data required
 - Storage method
 - Collection method and personnel
 - Intended output
- ☐ Attend to ongoing activities list.

2014

- ☐ Begin data collection for tree Inventory and Assessment in Spring 2014
- ☐ Introduce Project Learning Tree curriculum to local schools
- ☐ Complete Inventory and Assessment data collection by fall 2014.
- ☐ Update tree ordinance to address heritage tree removals.
- ☐ Finalize arboretum and nursery plans and implementation.
- ☐ Attend to ongoing activities list.

2015 Winter/Spring

- ☐ Complete inventory and assessment reports based on survey data.
- ☐ Distribute assessment report to Mayor and Council with recommendations. Make data, maps and assessment report available on the website for Borough residents.
- ☐ Begin developing specific action plans for tree planting, hazard tree removals, and tree maintenance (elevation, single stem pruning, deadwood removal, etc.) based on Inventory and Assessment data.

- ☐ Create some 'projects' for presentation to corporations and local businesses for financial support.
- ☐ Develop and institutionalize a tree work tracking system to keep Inventory data up-to-date.

2015

- ☐ Complete specific plans based upon Inventory and Assessment.
 - Planting Plan
 - Hazard Tree Reduction Plan
 - Maintenance Plan
- ☐ Make additional appeals to local businesses and corporations for program/project financial support.
- ☐ Obtain funding and make application for any applicable grants. Contact
 Mail Code 501-04
 Division of Parks and Forestry
 Community Forestry Program
 501 East State Street Email: alec.mccartney@dep.state.nj.us
 PO Box 420
 Trenton, NJ 08625 Telephone: (609) 292-2532 Fax: (609) 984-0378
- ☐ Attend to ongoing activities list.

2016

- ☐ A catch-up year by continuing to implement tree planting and tree maintenance plans based upon the Inventory and Assessment.
- ☐ Amend tree ordinance as needed to accommodate plantings on private property near the right-of-way in concert with Adopt-A-Tree Program.
- ☐ Enter in a contract to complete Stewardship Plans for Borough open-space.
- ☐ Work with others in the Borough to gain Sustainable New Jersey certification.
- ☐ Attend to ongoing activities list.

2017

- ☐ Continue ongoing work based on tree planting and maintenance plans.
- ☐ Update inventory via tree work tracking system.
- ☐ Start planning and contracting for next 5-year CFMP (2018-2022)
- ☐ Develop new priority list and list accomplishments – report to residents on past 5-years of accomplishment and thank for support.
- ☐ Attend to ongoing activities list.

X. Community Stewardship Incentive Program Practices

Upon approval of this plan and completion of the core training requirements, the Borough of Woodcliff Lake will be qualified to apply for Community Stewardship Incentive Program (CSIP) grants to help offset the cost of implementing this plan. The following is an index of CSIP practices listed in this plan and summary of applicability. Additional or revised grants may become apparent as plan implementation progresses.

CSIP #1 – Training

Pages 3, 14-15: See Goal #1 and Training Section. A summary of this practice is included in the training section of this plan and is included in the first goal of this plan.

CSIP #2 – Community Forestry Ordinance Establishment

Pages Appendix #1, #2, #3: The three existing ordinances are included in the appendix. Some amendment may be needed as noted in Goal #4 and 2014 Schedule of Work, **pages 5 and 25.**

CSIP #3 – Public Education and Awareness

Pages 5, 16-18: See Goal #5 and Section VII.

CSIP #4 – Arbor Day

Pages 3, 16: See Goal #5 and Section VII.

CSIP #5 – Tree Inventory

Pages 4, 20-23 and Throughout: See Goal #2 and Section IX & Schedule of Work. Tree Inventory is a primary Goal in this plan.

CSIP #6 – Hazard Tree Assessment

Pages 2, 20-23: See Goal #2 and Section IX.

CSIP # 7 – Storm Damage Assessment

Pages 20-23: See Goal #2 & Section IX. Storm Damage Assessment is mentioned as part of the Hazard Tree Management section. Windshield assessments are routinely made following storm events. The Inventory and Assessment will include further assessment of impacts from Hurricanes Irene and Sandy.

CSIP #8 – Tree Maintenance and Removals

Pages 4, 20-23: See Goal #3 & Section IX.

CSIP #9 – Insect and Disease Management

Pages 8-9: Section III, Overview Section. No serious insect or disease problems.

CSIP #10 – Wildfire Protection

Wildfire is not addressed in this plan.

CSIP #11 – Tree Planting

Page 8-9, 20-23: See Goal #4, Overview, Ongoing Activities and Implementation section.

CSIP # 12 – Tree Recycling

Page 5, 24: See Goal #4 & Ongoing Activities. The Borough collects leaves & twigs; composts and makes mulch available to residents.

CSIP #13 – Sidewalk Maintenance Program

There are very few sidewalks in Woodcliff Lake. No problems where noted.

CSIP #14 – Storm Water Management

Appendix. Mention of Storm Water Management is noted in one of the ordinances and the Master Plan in relation to the value of trees on steep slopes for erosion control and environmental values.

CSIP #15 – Other

None.

XI. Appendix

1. Ordinance 07-08; Chapter 53: Shade Tree Committee
2. Ordinance 07-09; Chapter 211: Shade Trees
3. Ordinance 07-10; Chapter 245: Tree Preservation
4. Woodcliff Lake Department of Public Works and Shade Tree Committee Agreement
5. Municipal Tree Budget -2013 and 2013 tree planting
6. WCLSTC Annual Reports

Use of Information:

The content of this Community Forestry Management Plan has been purchased by the subject municipality to guide a 5-year effort to manage its shade trees and publicly owned forests. The content, structure and organization remains the property of the authors, ForesTree Consultants, and may not be infringed upon by copying, adapting or sharing for use by another municipality or in future plans by the subject municipality without the expressed written consent of ForesTree Consultants.

Appendix #1:

Ordinance 07-08; Chapter 53: Shade Tree Committee

**BOROUGH OF WOODCLIFF LAKE
ORDINANCE 07-08**

An Ordinance Amending Chapter 53 "Shade Tree Commission" of the Code of the
Borough of Woodcliff Lake, County of Bergen, State of New Jersey

CHAPTER 53: SHADE TREE COMMITTEE

{HISTORY: Adopted by the Mayor and Council of the Borough of Woodcliff Lake 3-11-1963 as Ord. No. 208. Editor's Note: This Ordinance originally appeared as Ch. 81 of the 1970 Code. Amendments noted where applicable.}

GENERAL REFERENCES

Administration of government – See Ch. 2.

Land use and development – See Ch. 160.

Shade trees – See Ch. 211.

§ 53-1. Committee established.

There is hereby established and created in and for the Borough of Woodcliff Lake a shade tree Committee which shall be known as the "Shade Tree Committee of the Borough of Woodcliff Lake."

§ 53-2. Authority.

Advising the Governing Body on all matters concerning the regulation, planting, removal, care and control of shade and ornamental trees and shrubbery upon and in the streets, highways, public places and parkways, shall be exercised by and be under the authority of the Shade Tree Committee of the Borough of Woodcliff Lake.

§ 53-3. Membership.

The Shade Tree Committee of the Borough of Woodcliff Lake shall consist of no less than five members who shall be residents of the borough and who shall serve without salary.

§ 53-4. Appointment; terms; vacancies.

The Chairman and all members of the Shade Tree Committee shall be appointed by the Mayor and shall serve for one year terms. All existing members of the entity commonly known as the Shade Tree Commission or Shade Tree Committee shall be members of the entity organized hereunder.

§ 53-5. Powers and duties.

The Shade Tree Committee of the Borough of Woodcliff Lake shall have the authority to offer advice to the Governing Body as to:

- A. The regulation, planting, removal and care of shade and ornamental trees and shrubbery now located or which may hereafter be planted in any public highway, park or parkway of the Borough of Woodcliff Lake, including the planting, trimming, spraying, care and protection thereof.
- B. The ground surrounding such trees and shrubbery, so far as may be necessary for their proper growth, care and protection.
- C. The removal of any tree or part thereof dangerous to the public safety.
- D. Recommended that trees are necessary in particular areas and, with the consent of the Mayor and Council, that the cost of planting such trees shall be borne by the borough. [Added 11-12-1963 by Ord. No. 214]
- E. Encourage arboriculture.
- F. Suggest the creation, alteration, amendment or repeal any and all rules and regulations necessary or proper for carrying out the provisions of this chapter.
- G. Advise the Governing Body as to the administration of treatment to, or the removal of any tree situated upon private property which is believed to harbor a disease or insects readily communicable to neighboring healthy trees in the care of the municipality and enter upon private property for that purpose.
- H. Review and evaluate the removal of Heritage Trees on any property as pursuant to a Request for Heritage Tree Removal, pursuant to Ordinance 245-1, et. seq.
- I. Review proposed construction projects if referred to by Planning board and Board of Adjustment on:
 - Single residential lot where review is mandated by ordinance.
 - Small residential subdivision (up to 6 lots)
 - Small commercial development
 - Small Office Development
- J. Planting and removal of street trees throughout Woodcliff Lake.
- K. Arbor Day planting and ceremony.
- L. Recommendation of Shade Tree Species.
- M. Control of street tree maintenance.
- N. Advise as to the budget for street trees, maintenance and continuing education.
- O. Review of applications, inspections, responses and related correspondence and meetings as required as required with utility company representative.
- P. Undertake continuing education as to trees.
- Q. Embrace worthwhile tree-related programs.

§ 53-6. Costs of planting or removal of trees.

Except as hereinafter provided, the initial cost of trees planted by the Borough at the recommendation of the Committee, the cost of planting them, the cost of posts, boxes or guards used for the protection thereof and the cost of removal of any trees dangerous to public safety shall be the responsibility of the Borough.

§ 53-7. Notice of planting or removal.

Adopted on this 16 day of July 2007 roll call as follows:

ROLL CALL:

Introduce: Mr. Singer
Second: Mrs. Howley
Ayes: Mr. Bader, Mr. Camella, Mr. Glaser,
Mrs. Howley, Mr. Shapiro, Mr. Singer
Nays: None
Abstain: None
Absent: None

Approved:

Mayor Joseph T. LaPaglia

Attest:

Lori Sciara, Borough Clerk

Appendix #2:

Ordinance 07-09; Chapter 211: Shade Trees

Shade Trees 355-1,10

Adopted 9/16/07

**BOROUGH OF WOODCLIFF LAKE
ORDINANCE 07-09**

An Ordinance Amending Chapter 211 "Shade Trees" of the Code of the Borough of Woodcliff Lake, County of Bergen, State of New Jersey

CHAPTER 211: SHADE TREES

[HISTORY: Adopted by the Mayor and Council of the Borough of Woodcliff Lake 6-13-1966 as Ord. No. 243. Editor's Note: This Ordinance originally appeared as Ch. 82 of the 1970 Code. Section 211-9 amended at time of adoption of Code; see Ch. 1, General Provisions, Art. I. Other amendments noted where applicable.]

GENERAL REFERENCES

Shade Tree Committee – See Ch. 53.

Parks and ballfields – See Ch. 175

§ 211-1. Definition.

As used in this chapter, the following terms shall have the meanings indicated:

PERSON – Every person, firm, association, partnership, corporation and individual.

DRIPLINE – A line connecting the tips of the outermost branches of a tree projected vertically onto the ground.

SHADE TREE – Shade and ornamental trees and shrubbery now located or which may hereafter be planted in any public highway, park or parkway in the borough except those located or planted on county highways, parks and parkways and state highways.

~~SHADE~~ TREE COMMITTEE – The Shade Tree Committee of the Borough of Woodcliff Lake and its duly authorized representatives.

§ 211-2. Prohibited acts; exception.

A. No person, firm, corporation or individual connected with such firm or corporation shall do or cause to be done by others to any tree, shrub or plant on a public highway or place, either purposely, carelessly or negligently, without the permission of the Shade Tree Committee, any of the following acts:

- spikes (1) Cut, prune, climb with spiked, break, damage or remove. 571155
(2) Cut, disturb or interfere in any way with any root.
(3) Spray with any chemical, including pesticides.
(4) Fasten any rope, wire, sign or other device.
(5) Remove or damage any guard or device placed to protect any tree or shrub.
(6) Plant any tree contrary to the requirements of the Shade Tree Committee and approval of the Governing Body.

355-2 (1)

duplicate (same as (6))
(7) Plant any tree contrary to the requirements of the Shade Tree Committee and approval of the Governing Body.

B. Nothing herein shall prevent any governmental agency from tying a public notice upon a tree in connection with administering governmental affairs.

§ 211-3. Free access for air and water; open space.

- A. No person or corporation shall, without the permission of the Shade Tree Committee, place or maintain or cause to be placed or maintained upon the ground in any public highway or place any stone, cement or other sidewalks or any stone, cement and other substance which shall impede the free access of air and water to the roots of any tree or shrub in any public highway or place.
- B. An open space of no less than two feet outside the trunks of trees at their bases on all sides must be maintained on all trees on public highways, except where limited by curb and/or sidewalk. ?

§ 211-4. Injurious substances and vapors.

- A. No person shall place salt, brine, oil or other substances injurious to plant growth in any public highway or place in such a manner as to injure any tree or shrub growing thereon.
- B. No person shall build any fire or station any tar kettle, road roller or other engine in any public highway in such a manner that the heat vapors or fumes therefrom may injure any tree or shrub growing thereon.

§ 211-5. Laying of sidewalks and curbs; street paving.

No person, firm or corporation is permitted to lay any sidewalk along or to open, construct, curb or pave any street or do any like act so as to interfere with or do injury to any highway shade tree without the consent of the Shade Tree Committee.

§ 211-6. Excavations.

- A. In the erection, altering or repairing of any building or structure, the owner or contractor thereof shall place such guards around all nearby trees in public highways or places as will effectually prevent injury to such trees.
- B. No person, firm or corporation shall do any excavating within the dripline of any tree or shrub without the permission of the Shade Tree Committee.
- C. Shovels and all other implements, machines and tools shall be used or operated in such a manner as not to damage or destroy any tree, shrub or plant in any public highway place.
- D. Where in authorized excavations it becomes necessary to expose or cut roots more than one inch in diameter, it shall be the duty of the contractor to protect such roots under advice from the Shade Tree Committee.

§ 211-7. Attaching of devices; pruning or removal by utility companies.

- A. No person, firm or corporation shall, without permission of the Shade Tree Committee, attach or fasten any wire, insulator or other device for holding any wire to any tree or shrub in any public highway or place.
- B. Any utility company or its agents may, with prior permission from the Shade Tree Committee, prune and remove trees for line clearance of utility wires.

(ADD: in accordance
w/ Standard
Arborcultural
practice)

§ 211-8. Applications to Shade Tree Committee.

Where the permission, consent or approval of the Shade Tree Committee is required by the provisions of this chapter, any person, firm or corporation required to obtain such permission, consent or approval shall first make application therefore to the Shade Tree Committee, Borough of Woodcliff Lake, Bergen County.

§ 211-9. Enforcement.

The Construction Code Official is designated as the enforcing agent for this chapter and shall seek inspectors as he deems fit in connection with said enforcement.
tree experts

§ 211-10. Violations and penalties. Editor's Note: Amended at time of adoption of Code (see Ch. 1, General Provisions, Art. I).

Any person found guilty of violating any of the provisions of this chapter shall, upon conviction by the Magistrate of the Borough of Woodcliff Lake, be subject to a fine of not more than \$1,000 or imprisonment for up to 90 days, or both, in the discretion of the court. Each day any violation of this chapter shall continue shall constitute a separate offense.

Adopted on this 16 day of July 2007 roll call as follows:

ROLL CALL:

Introduce:	Mr. Singer
Second:	Mrs. Howley
Ayes:	Mr. Bader, Mr. Camella, Mr. Glaser, Mrs. Howley, Mr. Shapiro, Mr. Singer
Nays:	None
Abstain:	None
Absent:	None

Approved:

Mayor Joseph T. LaPaglia

Attest:

Lori Sciara, Borough Clerk

Appendix #3:

Ordinance 07-10; Chapter 245: Tree Preservation

BOROUGH OF WOODCLIFF LAKE

ORDINANCE 07-10

An Ordinance Amending Chapter 245 "Tree Preservation" of the Code of Borough of Woodcliff Lake, County of Bergen, State of New Jersey

CHAPTER 245: TREE PRESERVATION

[HISTORY: Adopted by the Mayor and Council of the Borough of Woodcliff Lake 10-8-2003 by Ord. No. 03-7. Amendments noted where applicable.]

GENERAL REFERENCES

Shade Tree Committee – See Ch. 53.

Shade trees – See Ch. 211.

Soil erosion and sediment control – See Ch. 225.

§ 245-1. Purpose and intent.

The Borough of Woodcliff Lake lies largely in hills and valleys of the historic Pascack Valley area of Bergen County, New Jersey, in which substantial portions were and are covered by native trees. The Borough of Woodcliff Lake recognizes that preservation of such trees enhances the natural scenic beauty, sustains the long-term potential increase of the quality of life and property values which encourages quality development, maintains the ecology, moderates the effect of extreme temperatures, prevents erosion of topsoil, helps create an identity and quality which enhances the attractiveness of the Borough of Woodcliff Lake to residents and visitors and increases the oxygen output of the area which is needed to combat air pollution. For these reasons the Borough of Woodcliff Lake finds that in order to promote the public health, safety and general welfare of the Borough of Woodcliff Lake, while at the same time recognizing individual rights to develop and maintain private property in a manner which will not be prejudicial to the public interest, it is necessary to enact regulations controlling tree removal and preserving the Heritage tree within the Borough of Woodcliff Lake. However, the Borough of Woodcliff Lake Council also recognizes that under certain circumstances Heritage trees may be properly removed. Those circumstances include dead or diseased trees; trees situated on land such that tree removal is based on a reasonable use and enjoyment of the property; or so abundant that their removal would not destroy the area's natural beauty or ecology or cause erosion. It is the intent of this chapter to preserve as many Heritage trees as possible throughout the Borough of Woodcliff Lake through staff review and the development review process.

§ 245-2. Definitions.

For the purpose of this chapter, the terms used herein are defined as follows:

APPLICANT – Any person or entity requesting permission to remove trees protected by this Ordinance.

CLEAR-CUTTING – The removal of substantially all trees from a lot.

DRIPLINE – A line connecting the tips of the outermost branches of a tree projected vertically onto the ground.

HERITAGE TREE – Any of the following:

- A. Any single-trunk tree with a circumference of 38 inches or more measured four feet above ground level.
- B. Any multitrunk tree of which the two largest have a total circumference of 60 inches or more measured four feet above ground level.
- C. Any tree 35 feet or more in height.
- D. Any tree specifically designated as a Heritage tree by official action.
- E. A stand of trees whose total aggregate circumference is 65 feet or more measured four feet from the ground.

PROTECTIVE BARRIER – A barrier constructed to protect the root system or trunk of a tree from damage during construction or from equipment or soil or material deposits. Such a barrier may consist of a snow fence, saw horses or other similar structures approved by the Shade Tree Committee, the Construction Code Official or The Borough Engineer and sufficient to protect the root system or trunk of a tree from the aforementioned damage.

TREE – Any living woody perennial plant having a diameter greater than three inches measured at a point four feet above the ground.

§ 245-3. Prohibited activities.

Except as hereinafter provided, no person, firm or corporation shall do or cause to be done by other, either purposely, carelessly or negligently, any of the following acts upon property within the Borough:

- A. Cut, destroy, remove or substantially injure any Heritage tree.
- B. Place or maintain upon the ground any substance which would impede the free access of air and water to the roots of any Heritage tree.
- C. Apply any substance to any part of a Heritage tree, including roots, with the intention to injure or destroy the tree.
- D. Clear-cutting of any land.

§ 245-4. Requirement for permit; exceptions.

Except as provided for herein, no person, firm, or corporation shall cut or remove more than four Heritage trees per year (defined as a twelve-month period, not January to December calendar year). If a person, firm or corporation cuts or removes four Heritage trees per year, he may not cut or remove any additional Heritage trees for a period of 12 months from the last tree cut or removed. Excepted from this shall be:

- A. All land-clearing operations as authorized in accordance with a Site Plan Approval or Subdivision Approval and conditions imposed with respect to tree removal and planting, granted by the Planning Board, the Shade Tree Committee or Board of Adjustments of the Borough of Woodcliff Lake in accordance with the provisions of N.J.S.A. 40:55D-20 (Exclusive authority of Planning Board and Board of Adjustment). Under no circumstances shall clear-cutting be permitted on any property.
- B. Trees located on a commercial nursery or orchard.
- C. The cutting, pruning or trimming of trees in a manner which is not harmful to the health of the tree.
- D. The cutting, destruction or removal of trees which are diseased or dead or which endanger public safety, to be determined by the Borough of Woodcliff Lake Shade Tree Committee.
- E. The cutting, removal or destruction of a tree as necessary to construct any structure for which a Building Permit has been issued by the Borough Construction Official.
- F. The cutting, removal or destruction of any tree pursuant to an order or directive of any municipal, county or state agency or court.
- G. Activities involving trees within the public highways, public rights-of-way or publicly owned properties. The Shade Tree Committee shall review and approve the trees that are to be removed in the public right-of-way, public highway or publicly owned properties in areas that are not to be paved.
- H. Cutting, pruning or trimming of trees to keep high tension power lines clear.

§ 245-5. Application for permit.

Any person, firm or corporation desiring to cut or remove Heritage tree(s) in excess of the aforesaid numbers and size(s) shall apply to the Borough of Woodcliff Lake Shade Tree Committee for a permit to remove such tree(s). The applicant shall, on the application:

- A. Identify, by street, block and lot number, the land upon which the tree(s) is located.
- B. Provide the name, address and telephone number of the owner or duly authorized agent of said owner, where applicable.
- C. Identify and place on the site plan application the location of said tree(s) sought to be cut, removed or destroyed.
- D. Mark said tree(s) on site by visible, weatherproof and reasonably tamperproof means; said tree(s) not to be sprayed with paint or chemicals or otherwise permanently marked, damaged or defaced.

§ 245-6. Permit required.

The Construction Code Official, except in accordance with the provisions of N.J.S.A. 40:55D-20 (Exclusive authority of Planning Board and Board of Adjustments) shall not

issue a building permit until a tree removal permit has been issued and approved in accordance with the provisions of this chapter.

§ 245-7. Protection of existing trees.

All persons subject to the provisions of this chapter shall comply with the following precautions:

- A. Prior to the commencement of construction, install protection at the dripline of any tree which is designated to be saved and prohibit any construction materials or other materials inside the barrier. The dripline shall not be altered in any way so as to increase the encroachment or the constructions.
- B. Prohibit excavation, grading, drainage and leveling within the driplines of the tree unless approved by the Code Official.
- C. Prohibit disposal or depositing of oil, gasoline, chemicals or other harmful materials within the dripline or in drainage channels, swales or areas that may lead to the dripline.
- D. Prohibit the excessive nailing, screwing or other permanent attachment of wires, signs and ropes to any Heritage tree or any tree in the municipal right-of-way.
- E. Design utility services (underground utilities) to be located outside of the dripline or tunnel under root line when possible to avoid trenching within driplines wherever possible.
- F. The Code Official shall be notified of any damage that occurs to a tree during construction so that proper treatment may be administered by the contractor.

§ 245-8. Application review by Shade Tree Committee.

Upon the Shade Tree Committee receiving the application for the cutting or removal, it shall review the site to determine whether the removal or destruction of said tree(s) shall change the drainage conditions, cause soil erosion, increase the dust, decrease the fertility of the soil or deteriorate the property value and shall further determine the overall physical conditions of the land and the deleterious effect thereon. In reviewing the aforesaid items, the Shade Tree Committee may utilize the services of the Borough Engineer and request and consider a report and recommendation from him with regard to same. In addition, to the aforesaid items, the Shade Tree Committee shall also consider the following in making its determination to issue or deny the permit:

- A. Whether the area where the tree is located shall be used for a building or other structure or a sewerage line, said tree located within 12 feet of any of the foregoing; whether the area where the tree is located shall be used for a patio, a driveway, a recreation area, a roadway or a drainage right-of-way, said tree located within four feet of any of the foregoing.
- B. Whether the tree or trees are likely to cause a hardship upon the applicant or place the community in danger or affect deliriously an adjacent property owner.

- C. Whether the cutting, removal and destruction of trees shall affect the drainage conditions, cause or contribute to soil erosion, increase the dust and decrease the fertility of the soil on the land under consideration.

§ 245-9. Time for decision.

The Shade Tree Committee shall, within 35 days after reviewing the side (weather permitting), render its recommendation whether to grant or deny the permit and it shall advise the applicant, the Construction Code Official and the Mayor and Council of the Borough of its recommendation. The failure to make a recommendation within 35 days shall be deemed an approval of the request. Except in the case of compelling or extraordinary circumstances, the Construction Code Official will issue or deny the tree removal permit based upon the recommendation received.

§ 245-10. Appeal to the Mayor and Council.

The applicant shall have the right to appeal the recommendation and decision regarding the tree removal permit to the Mayor and Council of the Borough of Woodcliff Lake within 10 days of the denial of the tree removal permit. Said appeal shall be by written notice of appeal to the Borough Clerk. Upon receipt of said appeal, the Mayor and Council shall proceed to hear said appeal upon notice to the applicant and the Shade Tree Committee within 30 days after the filing of said notice of appeal. The Mayor and Council may, in its discretion, and upon complete review of the application and after hearing the testimony of the Shade Tree Committee or its designee, Construction Code Official and the applicant, reverse, modify or affirm the aforesaid decision.

§ 245-11. Waiver.

Upon written application to the Woodcliff Lake Shade Tree Committee and for good cause shown, the Woodcliff Lake Shade Tree Committee may waive any of the requirements of this chapter.

§ 245-12. Enforcement.

The Construction Code Official is designated as the enforcing agent for this chapter and shall seek inspectors as he deems fit in connection with said enforcement.

§ 245-13. Replacement and treatment of trees.

- A. Any tree destroyed or removed in violation of this article shall be replaced by the owner with another four trees of the same species at least three inches in diameter measured at a point four feet above the ground. In the event that a tree which is not permitted to be removed is injured during building or other construction work, such tree(s) shall be promptly treated in an approved manner. If replacement on property designated by the Shade Tree Committee or the enforcing agent.

- B. The Construction Code Official of the Borough may order any tree work or other activity which is carried on in violation of any tree removal permit or any provision of this chapter, to be stopped forthwith. The order shall be issued in writing and a copy served upon any person engaged in tree work upon the subject lot. If no such person is present upon the lot, then the order shall be served upon the applicant; but if no permit has been issued as to such lot, then the order shall be served upon the owner of the lot. Thereafter, except for such work as is necessary to remedy the violation, any further work shall comply with the terms and conditions of any permit and the provisions of this chapter.

§ 245-14. Violations and penalties.

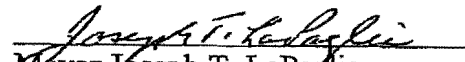
- A. Any person violating and provisions of this chapter shall be subject to a fine not exceeding \$1,000 or imprisonment for up to 90 days, or both, for each and every offense. In the event of violations involving more than one lot or more than one tree, a violation as to each such lot or tree shall be considered as a separate offense.
- B. If required replacement work is not completed within 30 days of written notification to do so, a municipal lien shall be placed upon all affected lots, and such lien shall not be discharged from such lots until such replacement work is completed.
- C. In addition to all other remedies set forth in this code or otherwise provided by law, and the following remedies shall be available to the town for violation of this chapter: (a) Stop Work -- Temporary Moratorium. If a violation occurs during development, the Borough in the discretion of the Construction Code Official, may issue a stop work order suspending and prohibiting further activity on the property pursuant to the grading, demolition, and/or building permit(s) (including construction, inspection and issuance of certificated of occupancy) until a mitigation plan has been filed with, and approved by, the Construction Code Official, agreed to in writing by the property owner(s), and either implement or guaranteed by the posting of adequate security. The mitigation plan shall include measures for protection of any remaining trees on the property, and shall provide for replacement of each tree removed on the property or at locations approved by the Shade Tree Committee and Construction Code Official. The replacement shall be in accordance with the standards set forth in this ordinance, and shall be greater than that required where tree removal is permitted pursuant to the provisions of this chapter.

Adopted on this 16 day of July 2007 roll call as follows:

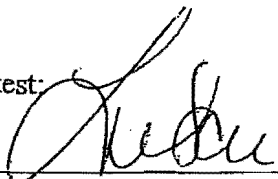
ROLL CALL:

Introduce: Mr. Singer
Second: Mrs. Howley
Ayes: Mr. Bader, Mr. Camella, Mr. Glaser,
Mrs. Howley, Mr. Shapiro, Mr. Singer
Nays: None
Abstain: None
Absent: None

Approved:


Mayor Joseph T. LaPaglia

Attest:


Lori Sciara, Borough Clerk

Appendix #4:

Woodcliff Lake Department of Public Works and Shade Tree Committee Agreement


DPW-Shade Tree

To review and understand how STC and DPW can work together most effectively and harmoniously in the future Dave Antoine and Clay Bosch met together on Oct.27 and discussed the following;

1. Communications
 - A. Email available - Dave - dpw@wclnj.com
 - B. STC meeting agenda, minutes will be sent to DPW
 - C. Dave will attend STC meetings when possible (hopefully as a member)
2. Feedback
 - A. Citizen complaints received by DPW will generally be reviewed with STC
 - b. DPW will advise STC/CO of possible Tree Ordinance violations
3. Street Trees - Woodcliff Lake
 - A.DPW can/will plant new trees as requested, with available personnel
 - B.DPW can/will prune trees (height limitation)
 - C.DPW can/will remove dead/hazardous trees; if size is a limit, work may be contracted out
4. Street trees - County
 - A DPW may remove dead/hazardous trees, subject to size and manpower constraints
5. Budgets

DPW/STC budgets usually overlap and supplement one another (no problems foreseen)

CJB

 11/1/10

Appendix #5:
2013 Municipal Tree Budget and
2013 Tree Planting Records

Borough of Woodcliff Lake
Municipal Tree Budget – 2013

Shade Tree Committee

\$14,750.

- Tree planting and replacement
(**Spring planting schedule** sent – 6 redbud, 2 hornbeam, 2 Amur maple, 6 tree lilac, 4 Northern red oak, 2 London plan, 8 sugar maple, 1 greenspire linden)

(**Fall planting schedule** sent – 5 maple, 5 redbud, 1 lilac **schedule is incomplete**)
- Education and Awareness
Arbor Day 4/26/13 - Lecture on proper tree planting for students who were going to plant trees given to them by committee, on their property.

Woodcliff Lake Day 6/22/13

1. distributed literature on proper tree planting
2. “volcanoes”
3. distributed small trees
4. distributed information on finding age of trees

Workshop on hazardous trees to be conducted by **Bill Comery** at a special meeting this year (date to be set).

88th Annual NJ Shade Tree Conference October 25 and 26

1. one member will attend for two days
2. one member will attend for one day
3. there may be more

* **Grants** – we are in the process of exploring grants.

DPW Tree Related

- **Pruning by town**
- **Leaf/waste compost by town**
According to DPW Super., loads of leaves transported to Organic, 117A Rt. 303, Tappan, NY – about 55,000 or more Cubic yards of leaves
Brush and trees brought to recycling center by town residents are shredded and composted by DPW workers on site.
- **Removals by town** – between 14 and 15 trees removed to date this year

2013 WCI Shade Tree Locations

Name	Address	Tele	# trees	Type of tree	date form signed	Date Marked Out	Date utilities checked	date tree planted	
1 across from galaxy	Fren St.		2 replacement	oak	NA	04/06/13			old planting holes
2 Jamie Botta	37 Brookview	391-1616	2	redbud		04/05/13			left of driveway
3 Renee Friedman	40 Shield dr	391-2126	2	London Plane	d	03/28/13			far right side of lot
4 Zachary Smith	41 Berkshire rd	391-0890	1	redbud	d	03/28/13			left of driveway
5 Jack and Margaret Meehan	41 Amy ct	930-0704	0	----	no interest				N/A
6 Katz	46 Fairview	930-9166	0	----	NA				
7 Joseph and Robin Forkner	35 Carnot	930-9406	2	Am Hornbeam		04/11/13			right of driveway
8 Vlad Katsnelson	111 Winding Way	5385955	2	Amur Maple		03/28/13			
9 Sully (near church)	58 Woodcliff Ave		1	Sugar Maple	NA	04/06/13			R of driveway
10 Michael and Maria Currie	7 Woodcliff Ave	358-6801	0	-----	no interest				N/A
11 Jennifer and Brent Barbara	63 Pinecrest drive	505-0406	0	----	no interest				N/A
14 Stacey Marisco	9 Wright st. north	(sjmarisco@hc	2	redbud		04/09/13			left side of house
15 Pat and Marty Kafafian	27 Oakwood Drive	391-3735	2	Sugar Maple		04/05/13			along lawn on sidestreet
16 Elizabeth Sagat	6 Renee Ct	917-568-8713	1	Sugar Maple		04/05/13			close to mailbox
17 Bill Imken	4 Cambridge Rd		1 replacement	Linden		04/08/13			in old place
18 Marilyn Clark	232 Glen Rd		1	Tree Lilac		04/08/13			
19 Amy Goldsmith	66 Old Farms Rd		2	sugar maple		04/08/13			right of driveway
21 Karolina Battaglia	24 Brookview Dr	391-4238	2	Sugar Maple		04/12/13			between old stumps
22 Edgar Wolf	53 Pinecrest Drive	573-9226	2	Oak	left message 4/13				
23 Lamendola	206 Pascack Rd	307-9306	2	lilac tree		04/08/13			along Pasc.
24 Pellicano	212 pascack	573-1486		lilac tree		04/08/13			along Pasc.
25 Kevin McGovern	31 Fairview	930-1592	2	1 lilac+1 redbud		04/15/13			in front of entrance
26 Dvorkin	1 Lyons Court	646-942-7957	0	-----					N/A
			Total Trees 31						
under powerline			no power line						
redbud, Cercis canadensis	6		Northern Red Oak, Quercus rubra	4					
Hornbeam, Carpinus caroliniana	2		London plane, Platanus x acerifolia	2					
Amur maple, A. ginnala	2		Sugar maple, Acer saccharum	8					
Tree Lilac, Syringa amurensis	is 6		Greenspire Linden, Tilia cordata	1					

* This is our Spring 2013 planting schedule, which we did.
From: Maureen Black, Woodcliff Lake 8/29/13

2013 W. Glenside Tree Locations FALL 2013 plantings

Name	Address	Tele	# trees	Type of tree	Date signed	Location Notes	Date Marked Out	Date utilities checked
1 David Pevler	56 Heather Hill Lane	307-0461	2	Maple	24-Apr			
2 Gina Wellington	55 Saddle River Rd	307-8787	1 or 2	Sourwood or Eastern Redbud	21-Apr	Uphill side of driveway		
3 Mary Napolitano	36 Heather Hill Lane	391-8199	2	eastern redbud or Amur maple	7-May	front		
4 Sunda Guita	150 apple ridge	575-0945	1	lilac tree	17-May	left side of house by neighbor.	10-Aug	
5 nicholas botta	37 brookview dr	391-1616	1	eastern redbud	7-Aug	replacement	10-Aug	
6 Jennifer Battaglia	24 brookview	391-4238	1	sugar maple		replacement	10-Aug	
7 Tennis courts	from left 2nd tree dead, 7th and 9th, base damaged			10 trees				

Antonia

No need for trees

Joseph Miller	15 Holly Ct	248-3887	1	Red Oak or Red Bud	20-Apr	left side of property or back by tank		
Kevin Metz	9 Winding Way	618-5949	2	Any type	7-May	in front of stone wall		

other locations

36 heather hill 6 to 8
 43 old pascack
 41 pascack
 Chirst Church Lutheran
 24 Pascack 2
 21 Pascack 1
 20 Pascack 1
 111 Winding Way 2

*Overlook & Saddle River Rd. - 3 Oak trees
 3-5
 Borough Hall - 2 - Lilacs*

* This is our Fall 2013 planting schedule, so far, which we did not do.

From: Marilyn Clark, Woodcliff Lake

8/29/13

Bert taylor

To: Bert Taylor (rockyb98@verizon.net)
Subject: trees to buy

<u>Property</u>	<u>quantity</u>	<u>type</u>		
		<u>Maple</u>	<u>redbud</u>	<u>lillac</u>
Metz	2	maple		
Pevler	2	maple		
Wellington	2		redbud	
Napolkitano	2		redbud	
Gulta	1			lillac
Botta	1		redbud	
Battaglia	1	maple		
Total	11	5	5	1

Fall, 2013 Continued
Marilyn Clark, Woodcliff Lake
8/29/13

Appendix #6:

WCLSTC Annual Reports

2010 ACTIVITIES

WOODCLIFF LAKE SHADE TREE COMMITTEE

Listed below, in no particular order of importance, are brief descriptions of our status, accomplishments and involvements during 2010

Personnel:

1. Members - Marilyn Clark, Adam Jacobs, Lynda Heineman, Fred Singer, Josephine Higgins and Clay Bosch
2. Chairmanship shared by Marilyn and Clay after the unfortunate death of Ed Levy in 2009
3. New council liaison Jeff Hoffman appointed
4. Dave Antoine appointed as DPW head

Trees

5. Street shade trees planted (13), Glen Rd. (4), new Broadway (4) new, Winthrop Rd. (5) replacement
6. Our estimate is that over 100 Heritage trees were removed with STC approval (RFTR procedure)

Other

7. An Arbor Day ceremony was held at WCL middle school; Bartlett Tree Co donated and planted a Red Oak tree.
8. Guidelines for tree protection during new construction were printed to be given potential builders
9. Curbs were requested on Broadway to protect our Linden trees there from erosion; construction is promised for 2011.
10. Ed Levy had arranged in 2009 for an American Elm to be planted at the site of the old van Riper copper beech on Chestnut Ridge Road; in 2010 a monument was built there and bronze plaques were installed --.
11. A recommendation (BY Ed Levy) against removal of six Heritage trees on Woodland Rd (Plechner) was overturned by the M&C
12. For the first time we used the services of a Certified Tree Expert to advise on tree viability.
13. A large Heritage tree at the Lydecker property was removed without the consent or knowledge of STC
13. STC participated in and had a display table in a Science Fair at WCL middle school.
14. A question of responsibility for trees planted in "tree planting easement" at the Mulholland development was referred to our attorney.
15. A revision to our ordinance, to take into account lots with few trees was proposed and is under consideration.
16. Recognising that more street trees must be planted, a was created to be given to homeowners for planting agreement.
17. A meeting with Emerson Shade Tree Commission gave us a good comparison of philosophies and procedures.
18. Volcanoes (piling of mulch around tree trunks) appears to be more common despite publicity advising against.



BOROUGH OF WOODCLIFF LAKE

188 PASCACK ROAD, P.O. BOX 8619, WOODCLIFF LAKE, NEW JERSEY 07677

JEFFREY R. GOLDSMITH, Mayor
WOLFGANG ALBRECHT, Borough Administrator

201-391-4977
Fax 201-391-8830

2011 Report Woodcliff Lake Shade Tree Committee

Listed below, not necessarily in chronological order or order of importance, are brief descriptions of our accomplishments, frustrations, involvements and status during 2011:

Personnel:

1. Members from 2010—Marilyn Clark, Adam Jacobs, Josephine Higgins, Fred Singer, Lynda Heinemann and Chairman Clay Bosch.
2. New appointments—Kathleen Bagley, Bert Taylor
3. Council liaison—Jeffrey Hoffman

Trees:

4. Shade trees plants: (35). See attached list for locations.
5. While no specific number is available, many big old trees continue to be removed by homeowners.

Other:

6. An Arbor Day ceremony was held at Woodcliff Middle School. A Callery Pear was furnished by the Shade Tree Committee and planted by JC Landscaping. Marilyn arranged for seedlings to be distributed to school children.
7. We continued to press for curbs to protect our Linden trees on Broadway; construction was imminent however. ADA concerns at the stairway held up work.
8. A revision to our main ordinance was requested to account for lots with less than four trees. No action by the Council.
9. We met with a volunteer from Americorps to evaluate whether we could utilize her expertise with our programs, however there didn't seem to be a match.
10. Adam arranged for Sav-A-Tree to save a large oak with a weak crotch by having it cabled to prevent splitting.
11. Marilyn submitted the necessary data to Arbor Day to have us awarded "Tree City" for the fifth year.
12. Through Jeff Hoffman, we arranged for Galaxy Gardens to donate ornamental bushes at the park entrance sign.
13. Adam represented the Shade Tree Committee at the Middle School Waterfest.
14. In preparation for upgrading of the park area on Werimus near the tennis courts, Dave removed the jungle along the stone wall, sprayed the poison ivy and had the Sheriff's Inmate Program rebuild the stone wall. (Unfortunately the wall was later vandalized and must be repaired.)
15. Effort was extended with our attorney to clarify the ownership and responsibility of trees at Mulholland, planted in the 10 ft. ROW and 5 ft. tree easement. However, the situation is still unclear.
16. Marilyn, Kathleen, Bert and Clay attended a Bergen Shade Tree League lecture on evaluating hazardous trees.

17. Lewis Tree Co. (hired by PSE&G) conducted a town-wide pruning of trees near utility lines with the usual complaints. Guy Vogt of PSE&G met with the Shade Tree Committee to review.
18. PSE&G arranged for Lewis to "top off" the Callery Pear trees on the north side of the causeway.
19. A street tree was removed in violation of ordinance; a violation was issued; the fine was negotiated.
20. Registration of tree removal companies is required in some local towns. Clay proposed we do the same to assure they are all aware of our ordinances and to keep track/control. The Shade Tree Committee did not support the concept.
21. Negotiations between Nick, Jeff and Clay and United Water Co. and Verizon at the new cell tower location (Overlook) resulted in preservation of many large trees previously planned for removal.
22. A tree nursery was proposed by Clay to provide trees for future use and as a vehicle for education and training volunteers.

Halloween Storm:

23. The storm caused major damage to trees in town (primarily Callery Pears --Stonewall Court , West Hill Road) as a result of an early snow weighing down on trees which still had leaves. (See Adam's report dated November 11th). A committee to address repair and/or replacement of trees was set up by Wolfgang; this program will be a major challenge to the Shade Tree Committee.

Clay Bosch, Chairman

cc: Shade Tree Committee; Wolfgang Albrecht, Borough Administrator; Nick Saluzzi, Zoning Code official; Mike Struk, Council Liaison; Mayor Jeffrey R. Goldsmith

Street Trees planted in 2011

Group I

1. Carnot Ave. (3)
2. Fairview Ave. (2)
3. Rose Ave. (1)
4. School (2)
5. Werimus Rd. (2)
6. Werimus Rd. (3)
7. Lydecker (10)
8. Dead (1)

Group II

1. Hillcrest Ave. (3)
2. Ravine Dr. (2)
3. Olde English Ct. (1)
4. Werimus Rd. (4)

CHB

2012
Woodcliff Lake Shade Tree Committee

Listed below, not necessarily in chronological order or order of importance, are brief descriptions of our accomplishments, frustrations, involvements and status during 2012:

Personnel:

1. Members from 2011—Marilyn Clark, Adam Jacobs, Josephine Higgins, Kathleen Bagley, Bert Taylor and Chairman Clay Bosch (unfortunately, as result of his employment change, Adam moved to New Hampshire in August 2012).
2. New appointments—Wiebke Hinsch, Carlo Disney
3. Council Liaison—Mike Struk

Trees:

1. Halloween Storm (2011)—Approximately 75 replacement street trees planted (not Callery Pears) primarily on West Hill and Stonewall Court. (Project expertly coordinated by Adam.)
2. Street Tree program—(22) new trees. See attached list for locations.
3. To commemorate Adam's service, a small Copper Beech tree was planted in the Werimus/Tennis Court area.
4. A large old Blue Atlas Cedar was donated to us by Galaxy Gardens; it was planted in same area as the Beech.
5. Based on an analysis of requests for tree removal, we estimate that 119 Heritage trees were removed legally in 2012.

General:

1. Marilyn supplied the necessary data to Arbor Day to have us awarded as a Tree City for the sixth year. *last time we had awarded*
2. Marilyn also arranged for our annual Arbor Day ceremony at Woodcliff Middle School at which time a Sugar Maple tree was planted. She had also conducted an "Oldest Tree Contest" for school children; awards were also given at the ceremony. (The oldest tree was a 300-year-old horse chestnut.)
3. Two Honey Locust street trees planted by us in the ROW in front of the Oritani Bank was run down by an unknown auto. Oritani was requested to assist in the cost of replanting with no response.
4. PSEG donated \$1000. for "the planting of trees compatible with utility lines." Some confusion on getting this money available to us.
5. Ellis Court—a long-term effort to preserve (3) large old Japanese Maples was concluded after long negotiations with the developer, resulting in creation of a planting well at the drip line of the first tree.
6. Cell Tower—earlier agreements with interested parties (Sprint, Verizon, United Water, etc.) resulted in preservation of some large native trees and planting of approximately 20 evergreens as a privacy barrier. Unfortunately, most evergreens have died and alternatives are being investigated.
7. A proposal to revise our ordinance to take into accounts lots with less than four trees was sent to the Council in 2011; no action has been taken so far.
8. Neighbor-to-neighbor conflicts continue to involve Shade Tree Committee (Suozzi, Hornsey, Taft Ct.)
9. A difference of opinion arose over a violation of Chapter 245 ordinance at 37 Fairview Avenue. Shade Tree Committee requested enforcement; Code Official and Mayor and Council declined.
10. Proposals for a tree nursery continue to be tempting, however long-term use of the Hathaway property is still unclear.
11. Wiebke Hinsch attended a full day Rutgers seminar on Hazardous Tree Identification.

12. Our project in the Werimus/Tennis Court area progressed according to our plan as follows:
(Previously DPW had removed the jungle at the stone wall and had the Sheriff's inmate program rebuild the wall)
- a. DPW removed the dead and unattractive trees along the wall.
 - b. Kathleen arranged for Eiseles' Nursery to plant (18) skip laurel bushes and (4) blue spruce trees alongside the tennis court fence for privacy.
 - c. Kathleen also arranged to have a sprinkler system installed for the new plantings.
 - d. Clay hired Forcellati Brothers to plant (9) Kwanzan cherry trees alongside the wall.

Hurricane Sandy:

1. This stormy was probably the worst disaster to hit Woodcliff Lake trees ever. Trees were snapped off and uprooted and fell on houses, autos, utility lines and roadways. While we will probably never know the total number of trees lost, it was surely in the hundreds. The storm also brought a concern for "the next storm" to many homeowners, who had additional healthy trees near their homes removed.

Clay Bosch,
Chairman

cc: Shade Tree Committee, Mayor Goldsmith, Councilman Bader, Wolfgang Albrecht, Dave Antoine, Nick Saluzzi

Street Trees planted in 2012

Aaron	44 Amy Court	(1) Sugar Maple
Abene	124 Woodcliff Ave.	(1) Sugar Maple
Albanese	12 Rose Ave.	(2) American Maple
Cohen	21 Princeton Dr.	(1) Red Oak
Currie	7 Woodcliff Ave.	(1) Sugar Maple
Felz	82 Wright St.	(2) Red Oak
Glaser	1 Lakewood Terr.	(3) Basswood
Leibowitz	132 Clairmont Dr.	(2) Ivory Silk Lilac
Levy	Pascack Rd.	(2) White Oak
	Mulholland Dr.	(2) Red Oak
Scully	58 Woodcliff Ave.	(2) Sugar Maple
Schuck	50 Werimus Ln.	(2) Red Oak
Zizzo	121 S. Carnot	(1) Sugar Maple
TOTAL		<hr/> 22



COMMUNITY FORESTRY STATUS REPORT 2010 (END-YEAR)

Status is awarded by compliance with the four requirements of the New Jersey Shade Tree and Community Forestry Assistance Act (P.L. 1996, Chapter 135).



Municipality

Woodcliff Lake Borough

County

Bergen

REACHING AND MAINTAINING APPROVED STATUS

Staying up to date with the FOUR requirements listed below will insure Approved Status for your municipality/county under the New Jersey Shade Tree and Community Forestry Assistance Act.

Has your municipality/county met Approved Status requirements under the Act for 2010, pending submission of a 2010 Annual Accomplishment Report by February 15, 2011? If this box says YES your municipality/county is still required to submit a complete Annual Accomplishment Report by February 15, 2011. If this box says NO, please check the requirements below to see those that you are missing.

NO

1. COMMUNITY FORESTRY MANAGEMENT PLAN

A current approved Community Forestry Management Plan is required for Approved Status.

Initial Management Plan Status

Grant 2003

Date Initial Management Plan Approved

Second 5-year Management Plan Status

N/A

Date Second Management Plan Approved

Third 5-year Management Plan Status

N/A

Date Third Management Plan Approved

Fourth 5-year Management Plan Status

N/A

Date Fourth Management Plan Approved

Management Plan Contact Name

Most Recent Plan Expires on December 31st of

N/A

2. CORE TRAINED COMMUNITY REPRESENTATIVES

It is required under the Act that each municipality/county have at least two CORE Trained individuals, one municipal employee and one community volunteer. An elected official will qualify as either a municipal employee or a community volunteer. The people listed here must be currently active in your shade tree program.

Primary CORE Volunteer

Marilyn Clark

Primary CORE Municipal Employee

David Antione

*Additional CORE Trained Representatives are listed on Page #2 of this Status Report.

3. CONTINUING EDUCATION UNITS

At least two individuals representing your municipality/county must accrue a total of 8 Continuing Education Units (CEUs) annually to maintain Approved Status under the Act. Any individual can attain CEUs on behalf of your municipality/county, they do not have to be CORE trained. CORE Training does not count toward CEU credits.

Number of CEUs Obtained to date in 2010

0

Number of Individuals Who Have Acquired CEU Credits to date in 2010

0

*Details about CEU's are listed on Page #2 of this Status Report

4. ANNUAL ACCOMPLISHMENT REPORT

An Annual Accomplishment Report records Community Forestry Management Plan implementation. A complete Annual Accomplishment Report detailing the years accomplishments under the plan, with Cover Sheet, must be submitted at the end of each calendar year by February 15th.

Annual Accomplishment Report for 2010

N/A

If you have any questions or concerns regarding this status report, or the names reflected within the report are no longer current please contact Todd Wyckoff at the New Jersey Community Forestry Program, todd.wyckoff@dep.state.nj.us or 609-292-2532. This Status Report is up to date as of: January 20, 2011

Please contact Todd Wyckoff at the New Jersey Community Forestry Program to update or correct the information found in this report: todd.wyckoff@dep.state.nj.us or 609-292-2532. If the tables are blank then there are no records on file.

CORE Trained Representatives

Municipality	Name	Type of Representative	Participated
Woodcliff Lake Borough	David Antoine	Municipal Employee	YES
Woodcliff Lake Borough	Marilyn Clark	Volunteer	YES
Woodcliff Lake Borough	Clay Bosch		NO
Woodcliff Lake Borough	George Mahe Jr.		NO
Woodcliff Lake Borough	Andrew Lukac		NO
Woodcliff Lake Borough	Adam Jacobs	Volunteer	NO
Woodcliff Lake Borough	George Catherwood	Volunteer	NO

2010 CEU's To Date